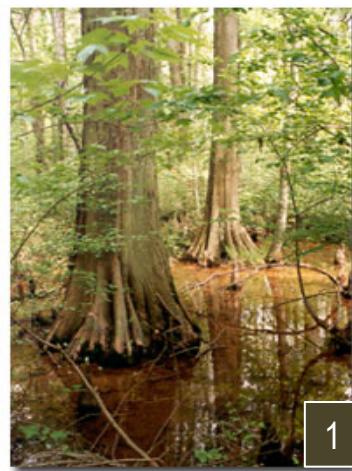




## Flora of the Dragon Run



1



2



3



4



5



6



11



12



7



8



9



10



13



14



15



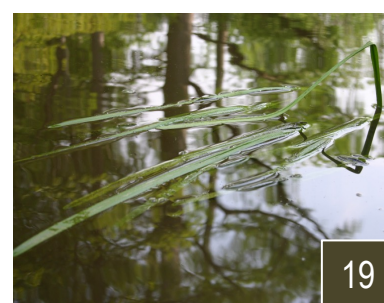
16



17



18



19



20



21



22



23



24



25



26



27



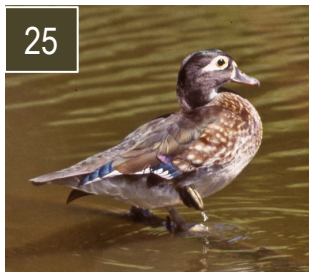
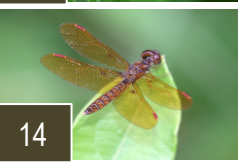
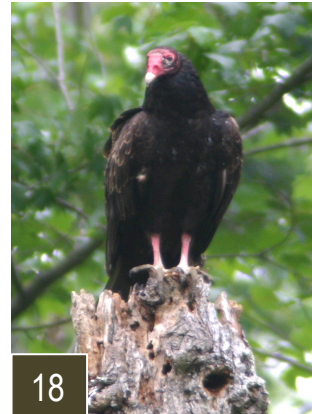
28

1. Baldcypress (*Taxodium distichum*)
2. River Birch (*Betula nigra*)
3. Amer. or Eastern Mistletoe (*Phoradendron leucarpum*)
4. Poison Ivy (*Toxicodendron radicans*)
5. Mayapple (*Podophyllum peltatum*)
6. Smooth Bur-marigold (*Bidens laevis*)
7. Resurrection Fern (*Pleopeltis polypodioides*)
8. Swamp Rose (*Rosa palustris*)
9. Water Stargrass (*Heteranthera dubia*)
10. Pink Lady's Slipper (*Cypripedium acaule* Aiton)
11. Arrow-arum (*Peltandra virginica*)
12. Pickerelweed (*Pontederia cordata*)
13. Virginia Blue Flag (*Iris virginica*)
14. Mosquito Fern (*Azolla caroliniana*)
15. Rose Azalea (*Rhododendron prinophyllum*)
16. Jewelweed (*Impatiens capensis*)
17. Com. Spatterdock or Yellow Pond-lily (*Nuphar advena*)
18. Amer. Featherfoil (*Hottonia inflata*)
19. Wild-celery or Tapegrass (*Vallisneria americana*)
20. Com. Dodder (*Cuscuta gronovii*)
21. Eastern Red Columbine (*Aquilegia canadensis*)
22. Fetterbush or Swamp Dog-hobble (*Eubotrys racemosus*)
23. Dense-flowered Smartweed (*Persicaria glabra*)
24. Greater Marsh St. John's-wort (*Hypericum walteri*)
25. Royal Fern (*Osmunda spectabilis*)
26. Cinnamon Fern (*Osmundastrum cinnamomeum*)
27. Lizard's-tail or Water-dragon (*Saururus cernuus*)
28. Common Blue Violet (*Viola sororia*)



# Fauna of the Dragon Run

1. North American Beaver
2. Snapping Turtle
3. Eastern Mud Turtle
4. Eastern Box Turtle
5. Barred Owl
6. Bald Eagle
7. Northern Watersnake
8. Green Frog
9. Green Treefrog
10. Fowler's Toad
11. Eastern Fence Lizard
12. Five-lined Skink
13. Appalachian Brown
14. Eastern Amberwing
15. Zebra Swallowtail
16. Eastern Tiger Swallowtail
17. Red-shouldered Hawk
18. Turkey Vulture
19. Eastern Pondhawk
20. Ebony Jewelwing
21. Blue Dasher
22. Carolina Chickadee
23. Red-headed Woodpecker
24. Pileated Woodpecker
25. Wood Duck (female)
26. Great Blue Heron
27. Yellow-throated Warbler
28. Prothonotary Warbler
29. Hooded Warbler
30. Summer Tanager
31. Red-winged Blackbird



Photos by Teta Kain, Gary Driscoll, and Beaver by Robert Walker, VDGIF

Compiled by Adrienne Frank. For more information about the Friends of Dragon Run go to: [www.dragonrun.org](http://www.dragonrun.org) Rev. 2023