



Photo by Kevin Howe

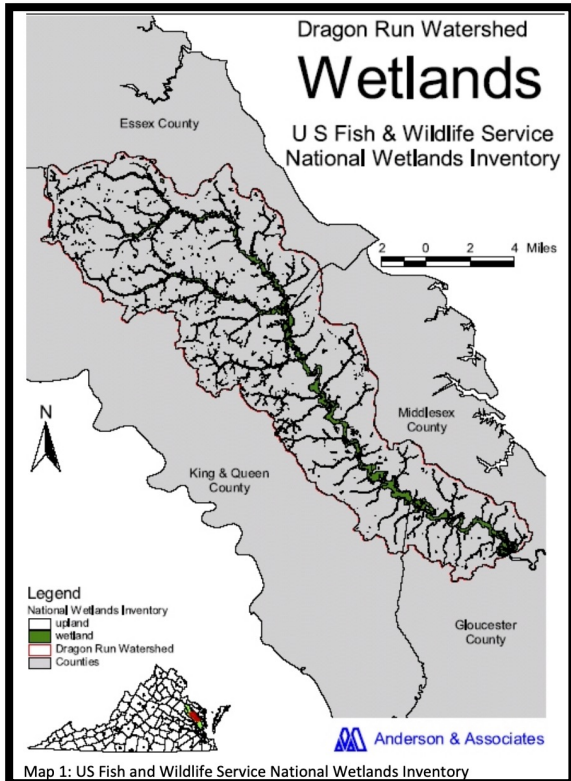
Go To Our Website:  
[www.DragonRun.org](http://www.DragonRun.org)



Photos by Teta Kain

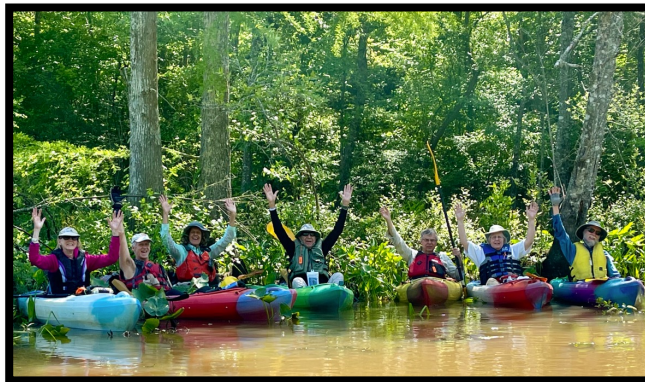


Photo by Tom Crockett



## FRIENDS OF DRAGON RUN, INC

P.O. Box 882  
Gloucester, VA  
23061



JOIN US IN  
PROTECTING THE  
DRAGON!





**Dragon Run** is a pristine tupelo/bald cypress swamp that winds for 40 miles through Virginia's Middle Peninsula and empties into the Piankatank River.

When you paddle through or hike in the Dragon, you are witnessing how Native Americans and the first colonists may have seen it hundreds of years ago. You'll see magnificent bald cypress trees that are hundreds of years old; bald eagles nesting in the tops; and resurrection ferns growing on the branches.

Prothonotary warblers, wood ducks, and red headed woodpeckers make their homes along the waterway, and dozens of other species stop-over during their spring and fall migrations. Beavers, raccoons, muskrats, otters, and deer also make their home in the Dragon Run watershed.

More than 63 species of fish along with turtles and amphibians live in the waters of the Dragon and are sustained by numerous native aquatic plants. Throughout the spring, summer, and fall, you'll see dozens of colorful butterfly, moth, and dragonfly species.

In 1974, a Smithsonian study ranked Dragon Run second in ecological significance out of 232 areas evaluated in the Chesapeake Bay watershed.

**Friends of Dragon Run** is committed to preserving, protecting, and encouraging the wise use of the Dragon Run watershed. We carry out our mission through education, stewardship, and citizen science. Member support has enabled us to protect more than 618 acres of swamp and upland forest with nearly three miles of water access. Additional tracts of land are protected by conservation easements.



**Join us:** As a FODR member you will be taking an active role in preserving this pristine ecosystem. Membership benefits include voting rights to elect directors, participation in guided nature hikes, quarterly general meetings presenting an exciting line-up of speakers, four newsletters per year, and participation in volunteer activities such as land stewardship, paddle crew, logistics personnel, citizen science events, and trail maintenance.



*Photo by Anne Atkins*

**FODR** dues will be used for land purchases, management and stewardship expenses, and operating costs such as taxes and insurance. Annual dues provide a steady income to meet FODR's basic needs. All board, committee, paddle, and logistics crew members are volunteers; and all funds received are used to fulfill our goals as good stewards and to share Dragon Run with others.

Membership costs \$25 for each individual, \$50 per couple, and is valid for one year. We also offer lifetime memberships at \$1,000 per individual or couple. Friends of Dragon Run, Inc. is a non-profit corporation with status under Section 501(c)(3) of the Federal Internal Revenue code. A donation can be made online or send to:

**FODR**  
**P.O. Box 882**  
**Gloucester, VA 23061**

If you are submitting your membership as a couple(\$50. or more), please include both names and email addresses.

Name: \_\_\_\_\_

Email: \_\_\_\_\_

Street Address: \_\_\_\_\_

\_\_\_\_\_

Town: \_\_\_\_\_

Zip: \_\_\_\_\_